



EXTENSION HUB 8 WAY - WALL MOUNT

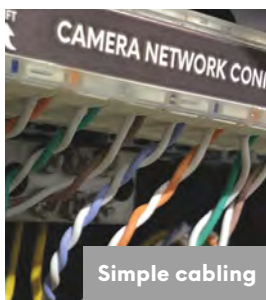
Every CORE system has a Control Hub which will power 6 QLS devices (CORE cameras or I/O modules) directly. To connect additional devices you need an Extension Hub.

Provided in a dust-proof wall-mounted enclosure, this 8-way Extension Hub is a fully assembled and pre-configured unit which works with the Control Hub to provide power and data connections for 8 additional QLS devices.

Extension Hubs are available in 4-way wall-mount (CT-EHBB-204), 8-way wall-mount (CT-EHBB-208), and 8-way rack-mount (CT-EHBB-108) versions.

The Extension Hub communicates to the Control Hub using the Hublink protocol. It can either be connected directly to the Control Hub or daisy-chained from another Extension Hub. The Control Hub has one Hublink port, and Extension Hubs have two Hublink ports. Additional Hublink ports can be specified with order if required.

Features



Simple cabling

Designed specifically for use with fire-rated "FP" data cable, all cable termination is via punchdown block or screw terminal, and are clearly labelled and easily accessible.

Cable entry is via 20mm glands which are supplied ready-fitted so no drilling is required.



Battery backed

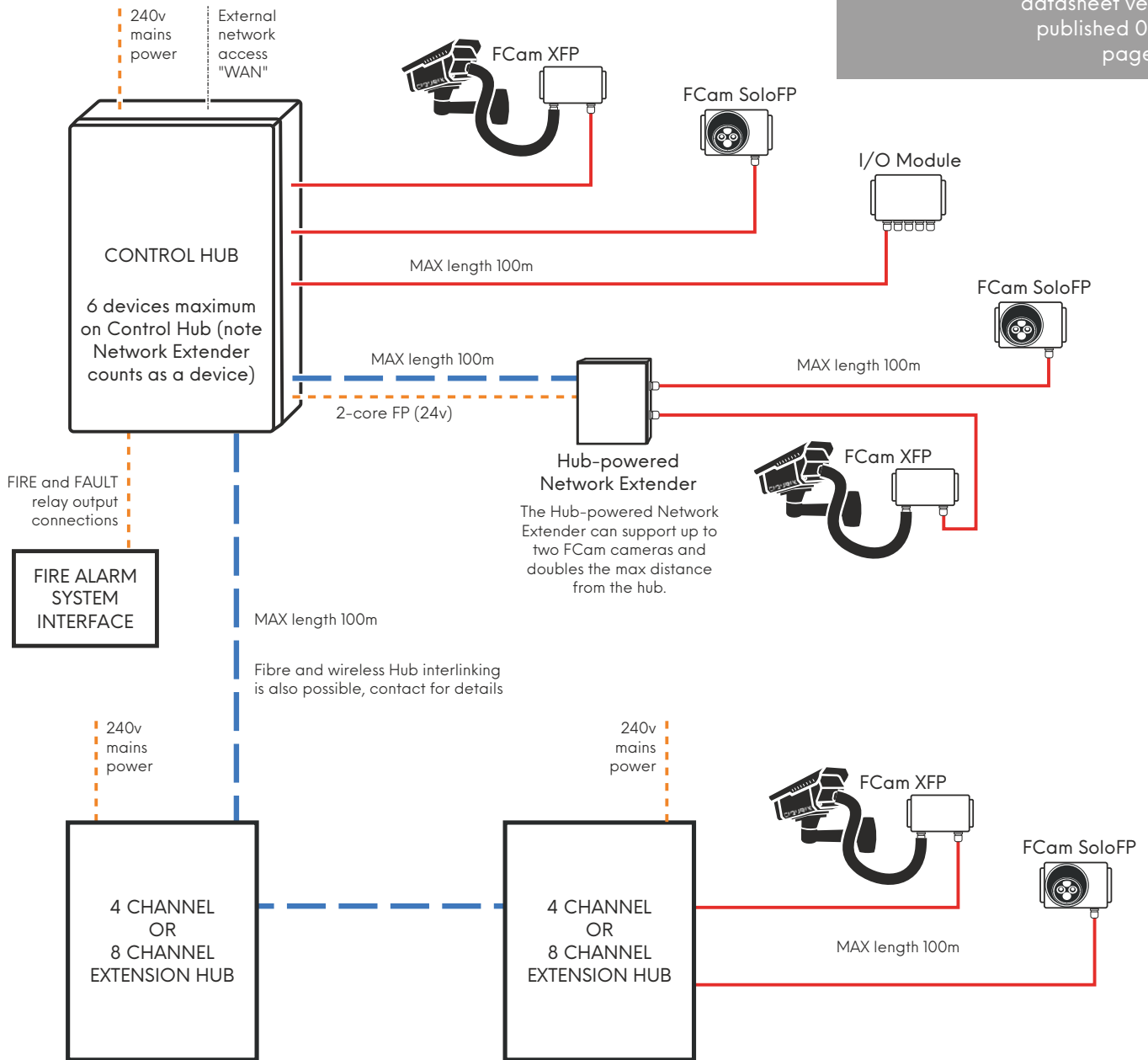
Meets the requirements of BS5839-1 for L1-5 and P1-2 category systems (with remote fault monitoring).

During mains failure it will continue to power the attached QLS devices for a minimum of 24 hours in standby plus 30 minutes in alarm.

Layout

This is an indicative layout for guidance only. Every site is different; please contact your supplier for advice.

- — — Hublink - fire rated cat6 - data
- — — QLS - fire rated cat5e or cat6 - data/power
- - - - - Ancillary connections - standard "FP" 2 core



4 or 8 additional devices maximum per Ext Hub (depending on model).
Hubs can be connected directly to Control Hub or daisy-chained.

Each QLS field device is connected directly to a Hub using a fire rated 4-pair cat5e or cat6 data cable. Hubs are linked together using fire rated 4-pair cat6 data cable (fibre-optic and wireless linking is also possible). Hub-powered Network Extenders also require a fire rated 2-core dc power cable from a Hub.

E&OE. Ciqurix operates a program of continuous product development. Specifications may be subject to change without notice. Please check with Ciqurix for the latest information.

Specification

Voltage:	220-240Vac 50Hz
Current:	4A (inrush max 30A <30ms)
Power Input:	Screw terminal
Batteries:	Yuasa NPL65-12I 65Ah 12V VRLA x 2 (included)
Temperature:	+5 to +40 °C < 90% Humidity
Environment:	IP60 (suitable for dusty areas, internal use only)
Dimensions:	600mm (w), 300mm (d), 1000mm (h) - excl fixing brackets
Weight:	127kg (incl batteries)
Connections:	1 x mains power terminal block 8 x QLS ports for FCam CORE cameras or CORE I/O Modules (Krone IDC punchdown) 2 x Hublink ports for Control Hub / Extension Hub connections (Krone IDC punchdown)
Optional:	Additional ports for I/O Modules only (max 2), fibre optic upgrade to Hublink port(s), aux power terminals for Network Extender/s, modified Hublink port(s) suitable for wireless hub-hub link. <i>All options incur a fixed customisation fee plus the cost of any additional equipment required.</i>

